

For Windows only

Supported products

HA-P90SD

Recommended hardware

PC with Intel Core 2 Duo or faster processor and 1 GB or more memory

Supported operating systems

Windows 7 (32/64-bit)
Windows 8 (32/64-bit)
Windows 8.1 (32/64-bit)
as of January, 2015

Precautions before installation

Install the dedicated driver software before connecting the computer by USB.

Correct operation will not be possible if you connect the computer before installing the driver.

ASIO is a trademark and software of Steinberg Media Technologies GmbH.

Microsoft and Windows are either registered trademarks or trademarks of Microsoft Corporation in the United States and/or other countries.

Other company names and product names in this document are the trademarks or registered trademarks of their respective owners.

Driver installation procedures

ATTENTION

The V1.0.0.1 driver supports HA-P90SD V1.02 and later firmware versions. If the unit is using an older firmware version, update the firmware before updating the driver.

1 Uncompress the downloaded file.

2 If using a 32-bit operating system, double-click the TEAC_HA_P90SD_AasioDriver32bit.exe file to open the installation wizard.

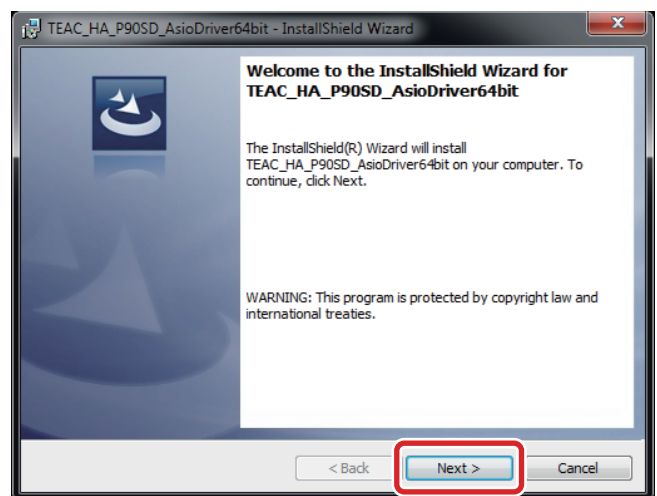
If using a 64-bit operating system, double-click the TEAC_HA_P90SD_AasioDriver64bit.exe file to open the installation wizard.

If a Software (program) use confirmation pop-up appears, click "Run" or "Yes" to continue with installation of the driver file.

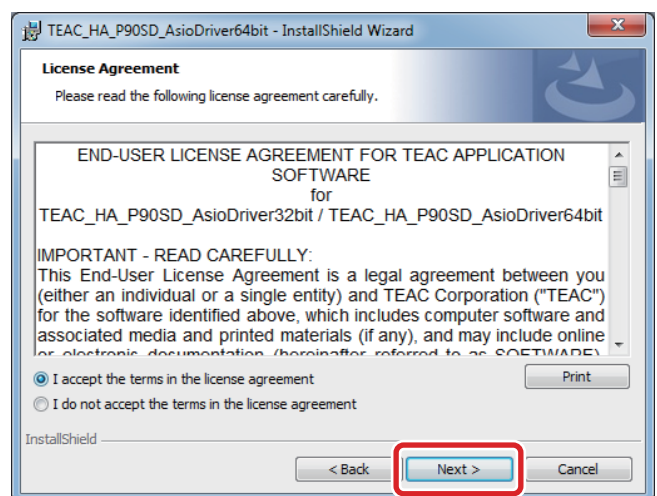
3 Select the language that you want to use for installation and click "OK".



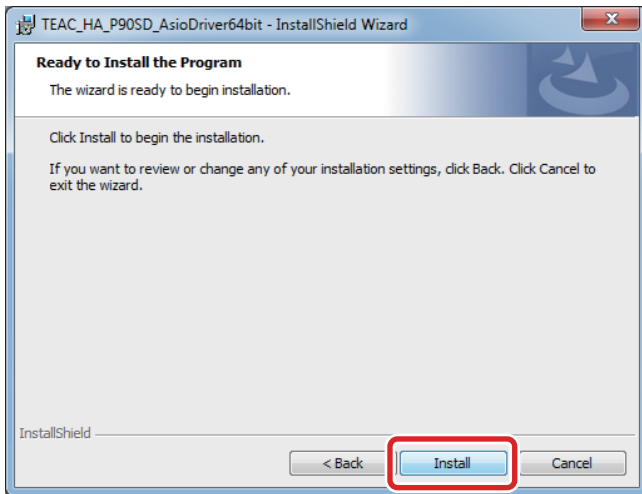
4 Click "Next".



5 After confirming the contents of the License Agreement, select "I accept the terms in the license agreement" and click "Next".



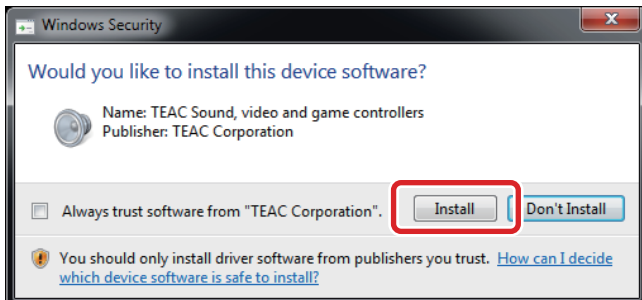
6 Click "Install".



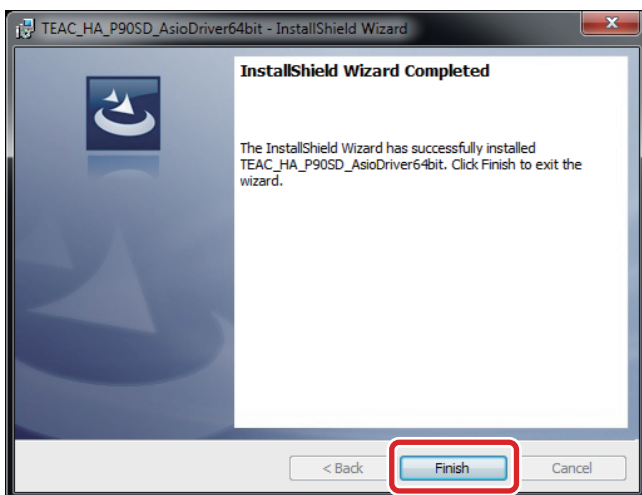
7 If a Windows security pop-up message appears during installation, click "Install" or "Continue Anyway".

Windows 8.1, Windows 8 and Windows 7

Display example



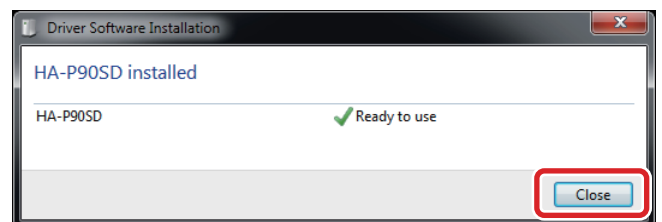
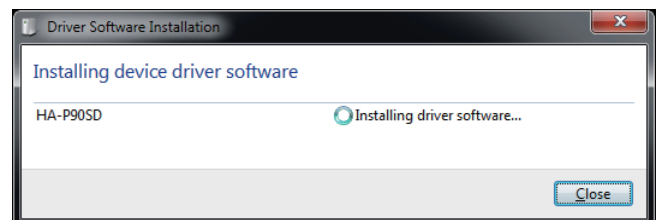
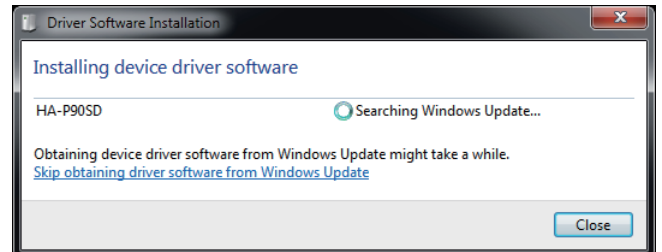
8 When the wizard's completion screen appears, click "Finish" to finish the installation.



Connecting with a computer

The first time the unit is connected to one of the computer's USB ports, a driver will be detected automatically.

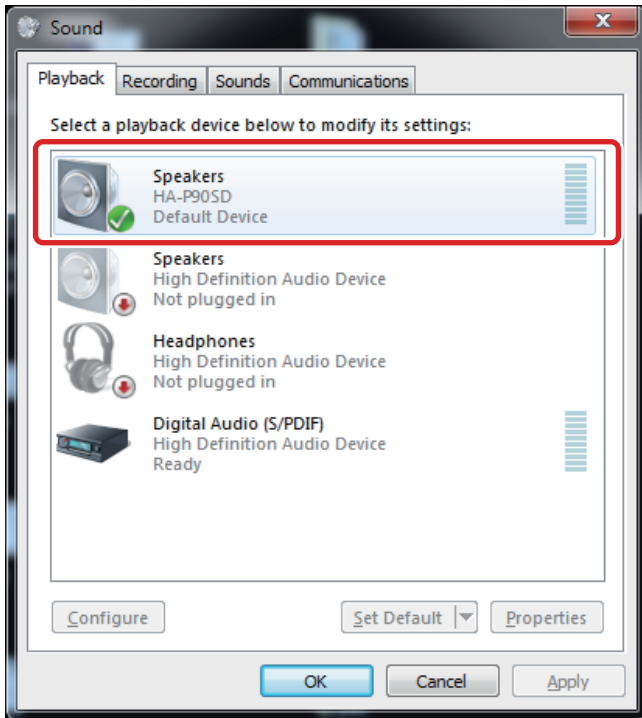
The contents of the driver software installation window will change as follows.



When "✓ Ready to use" appears, click "Close" to finish the installation.

If the connected unit has been recognized properly, when you open the Windows Sound Control Panel, "HA-P90SD" will have been added as a playback device.

Windows 7 example



Setting the audio output device

When you open the Windows Sound Control Panel, the "HA-P90SD" can be selected as the default device for sound playback.

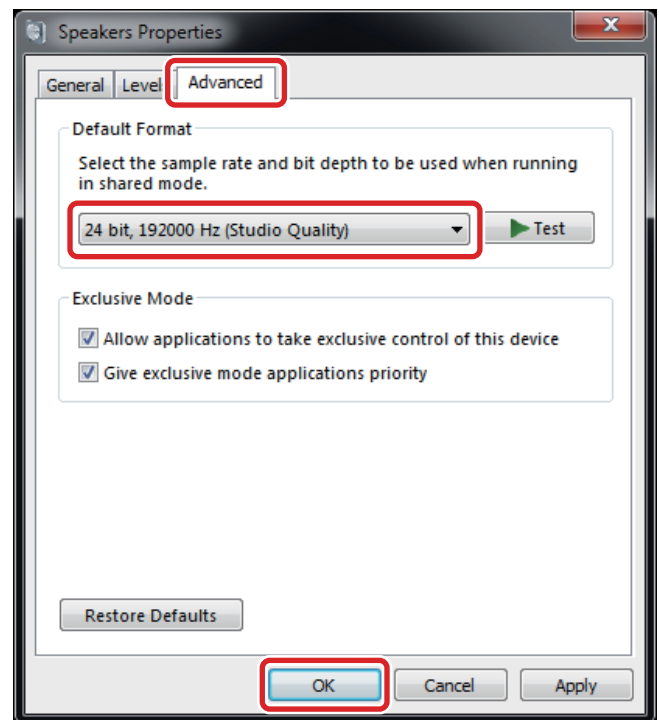
The device selected here will be used to output Windows operation sounds and the sound of playback from Windows Media Player.

When using Windows 8.1, Windows 8 or Windows 7, you must change the settings as follows to set the default device for sound playback.

1 After selecting "HA-P90SD" on the Sound Playback screen, click "Properties".

2 Click the Advanced tab at the top of the Speakers Properties screen.

Click the field that shows the "Default Format" setting to open a pull-down menu and select a sampling frequency of 192000 Hz or less.



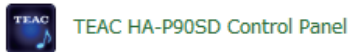
3 Click "OK" to confirm the setting.

HA-P90SD Control Panel

If the computer being used meets the minimum system requirements, making the following adjustment should not be necessary.

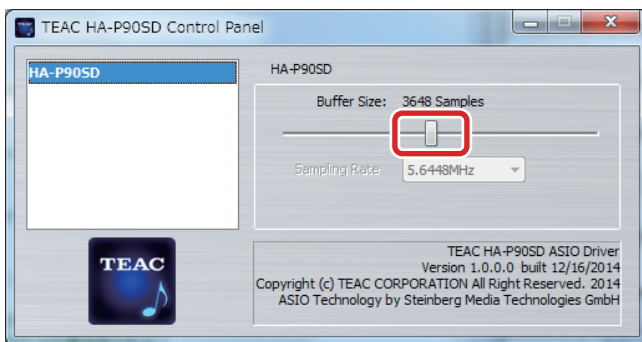
If the playback sound is unstable due to the system being used, increasing the buffer size might correct this.

Click the following icon in the Windows Control Panel.



The following window will appear.

If necessary, move the slider (inside the red box in the window shown below) to change the buffer size.



Music playback software settings

To output audio from music playback software from this unit when connected to a computer by USB, set the sound playback device to "HA-P90SD" in the settings of the software that you are using.

See the instructions for that software for details about how to set the sound playback device.

If the software does not have a sound output device setting, usually sound will be output from the device selected as the Default Device set for Windows sound playback as described above.

- If you only want the sound from specific software to be output from this unit, select "HA-P90SD" in the settings of that software, but do not set "HA-P90SD" as the Default Device for sound playback in the Windows Sound Control Panel.

Update history

V1.0.0.1

Sometimes a slight noise occurs immediately after starting playback, pausing or between tracks during continuous playback, for example. This has been reduced.