

### Models covered

UD-505, NT-505

### Supported operating systems

Windows 7 (32/64-bit)  
Windows 8 (32/64-bit)  
Windows 8.1 (32/64-bit)  
Windows 10 (32/64-bit)  
As of March, 2018

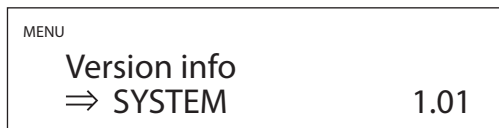
#### NOTE

In this manual, we refer to both the UD-505 and the NT-505 as “the unit”.

### Checking the firmware version

- 1 Turn the unit on.
- 2 Press the MENU button to open the menu screen.
- 3 Turn the input selection (INPUT or SOURCE) knob to show the firmware version (Version info).

Display example



The number shown to the right of “SYSTEM” is the firmware version.

Microsoft and Windows are either registered trademarks or trademarks of Microsoft Corporation in the United States and/or other countries.

Other company names and product names in this document are the trademarks or registered trademarks of their respective owners.

### Update procedures

A micro-USB cable is necessary to update the firmware. **Use a commercially-available cable.**

Set the unit’s POWER switch to OFF, and follow the procedures below. Do not connect the unit to the computer until instructed to do so.

#### NOTE

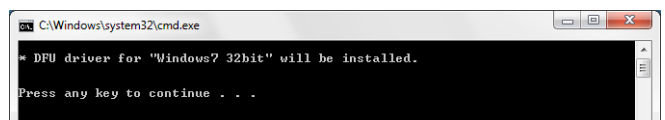
The screens used in these instructions are from Windows 7.

### 1 Uncompress the downloaded file.

The following files will appear.

- Win\_DFU\_driver.exe
- NTUD505\_updater\_xxxx.exe (“xxxx” is the firmware version.)

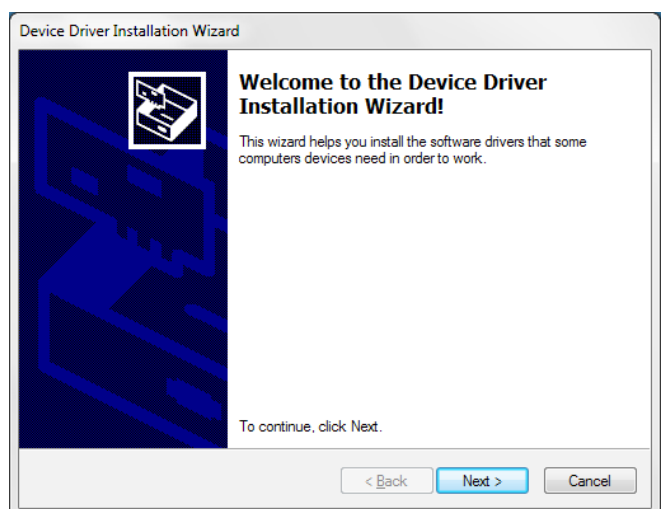
### 2 Double-click Win\_DFU\_driver.exe, and press the Enter key.



#### NOTE

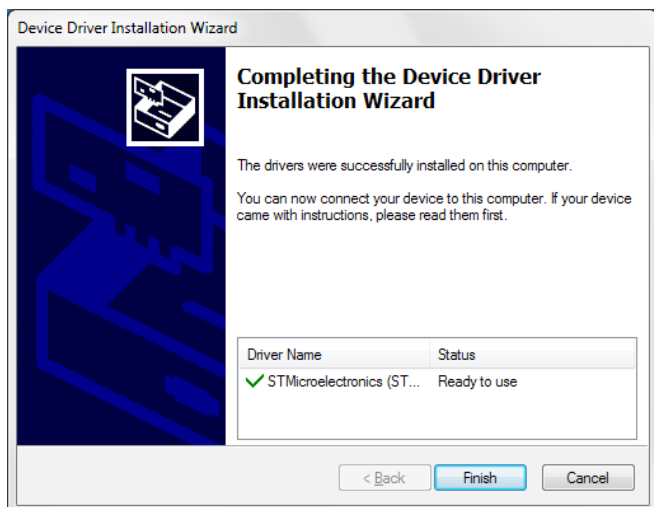
If a “User Account Control” pop-up message appears during installation, click “Yes”.

### 3 When the Device Driver Installation Wizard appears, click “Next”.

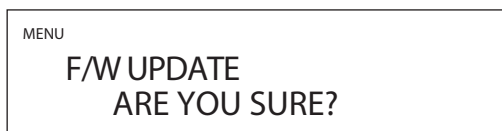


Continued on the next page →

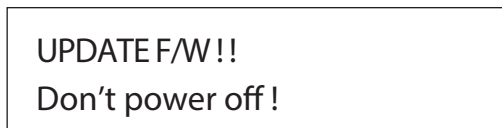
### 4 Click "Finish".



### 5 While pressing the input selection (INPUT or SOURCE) knob, set the unit's POWER switch to ON.



### 6 When "F/W UPDATE" appears, press the input selection (INPUT or SOURCE) knob.

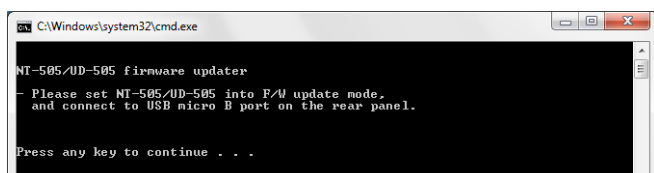


If the screen shown above does not appear, set the unit's POWER switch to OFF, and repeat step 5.

### 7 Use a USB cable to connect the computer to the USB Micro-B maintenance port on the back of the unit.

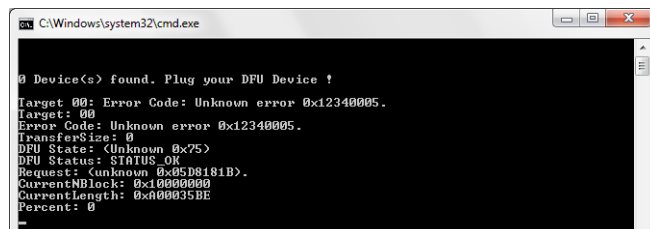
Refer to the unit's operation manual for the location of the maintenance port.

### 8 Double-click NTUD505\_updater\_xxxx.exe, and press the Enter key.



### NOTE

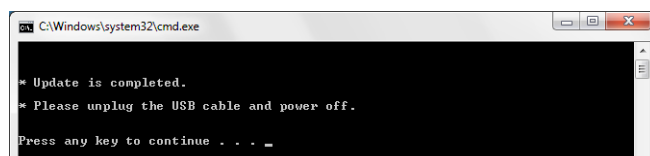
The following screen will appear if the unit is not recognized by the computer. Click the x at the top right of the window to close it.



Check the connection between the computer and the unit, and double-click NTUD505\_updater\_xxxx.exe.

- Cables designed only for charging cannot be used for firmware updates. Use a USB cable.
- Connecting to a different USB port on the computer might allow it to recognize the unit.

### 9 When "Update is completed." appears, press the Enter key to close the window.



### 10 Set the unit's POWER switch to its OFF position.

Follow the procedures in "Checking the firmware version" on the previous page and check the firmware version.